

MECSEKÉRC Zrt.

Outstanding earth engineering knowledge

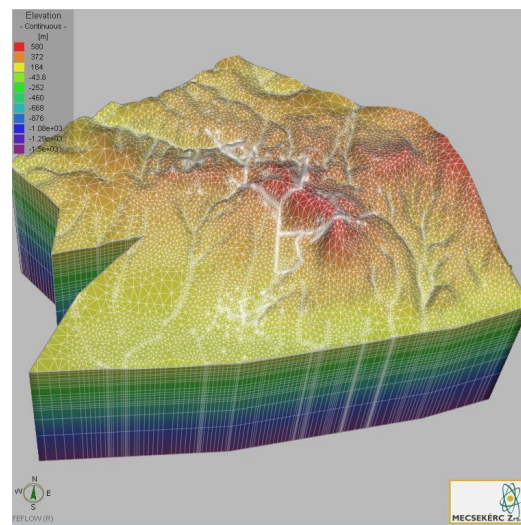
We asked the CEO of the company, János Molnár, about the market role of MECSEKÉRC Zrt. And its special engineering skills.

What makes Mecsekérc Zrt different from other mining companies?

In the activities of our company, the mining activity itself is now almost negligible, is mainly limited to the closure of abandoned or depleted mines and the reclamation of landscape wounds caused by mining activities, but in the near future, due to the exploration and extraction of rare earths and the reduction of CO2 emissions, alternatives to traditional raw materials will be used, e.g. geothermal research may come to the fore.

Thus, geological and hydrogeological research and related engineering and project management activities currently occupy a larger place in our portfolio.

It is safe to say that we have successfully applied previous mining experience and engineering knowledge in the areas of raw material data collection and data analysis. We visualize the huge data sets of previous geological researches with 3D graphs and with their help we can set up more precise extraction project plans and new utilization models.



How to utilize the versatile service portfolio of MECSEKÉRC Zrt in Mongolia?

Due to the large geographic distance, we are primarily committed to presenting our knowledge-based services at Build Mongolia 2022, which are have already proven to be globally competitive.



These include complex geological exploration of mineral resources, mineral resource estimation, groundwater exploration, project impact assessments, complex on-site surveys and sampling, or environmental condition assessment, technical intervention planning, polluted water management is also part of our daily practice. We use the latest and most cost-effective technologies in the design of our remediation projects.

What kind of professional team does the company undertake with all these tasks?

We have always been proud that our engineers and experts are armed with multi-layered knowledge and decades of experience from different fields (geologist, hydrogeologist, mining engineer, etc.) With their help, we can solve complex problems from special civil engineering (for example, the construction of tunnels for deep storage of radioactive waste,) to the complete design and implementation of large-scale geological and water exploration projects (for example, integrated exploration of geothermal, mineral, medicinal waters) .



We hope to share our experience with Mongolian companies and start joint projects.